



OAKFIELD



Midway Quay, Eastbourne, BN23 5DE

Price Guide £200,000



## Midway Quay, Eastbourne, BN23 5DE

PRICE GUIDE: £200,000 - £210,000

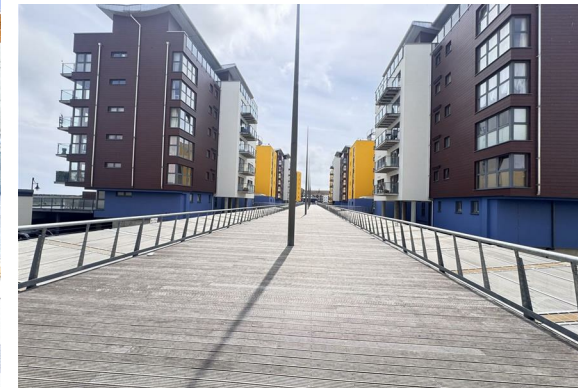
Situated in the highly sought-after area of Midway Quay, Eastbourne, this beautifully presented ground floor apartment offers spacious, contemporary living in a stunning waterfront setting.

The property features two generously sized double bedrooms and two stylish, modern bathrooms, making it an ideal home for professionals, couples, small families, or those looking for a coastal retreat.

Finished to a high standard throughout, the apartment boasts a bright and spacious open-plan living area, creating the perfect space for both relaxing and entertaining. Large doors open onto a private balcony overlooking the picturesque harbour, providing an idyllic spot to enjoy your morning coffee or unwind while taking in the peaceful waterside views.

Further benefits include allocated off-road parking, a highly desirable feature in this popular location.

Combining modern interiors with an enviable harbourside position, this exceptional apartment offers the very best of coastal living. Conveniently located close to local amenities, waterfront walks, restaurants and transport links, it presents an excellent opportunity for first-time buyers, downsizers, holiday home seekers or investors alike.





**Living Room/ Kitchen**  
25'6 x 11'1 (7.77m x 3.38m)

**Bedroom One**  
16'1 x 11'4 (4.90m x 3.45m)

**En-Suite**  
4'7" x 3'10" (1.40 x 1.17)

**Bedroom Two**  
11'5" x 9'3" (3.48m x 2.82m)

**Bathroom**  
9'1" x 4'11" (2.78 x 1.50)

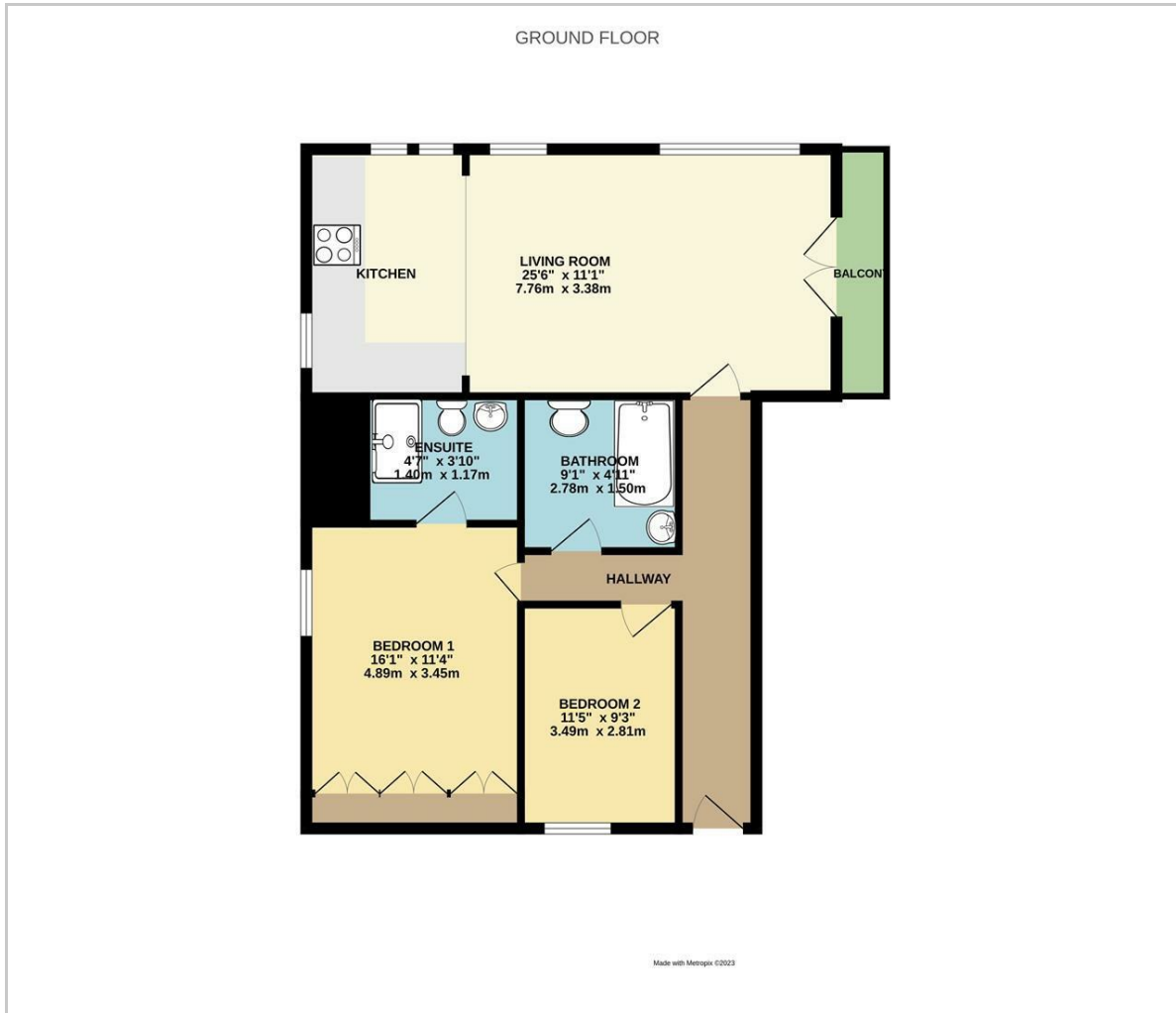
**Council Tax Band - D £2,654.28 per annum**

**Lease Information**

The seller advises that the property is offered as a leasehold and has approximately 103 years remaining on the lease. The service charge is approximately £3,062.88 per annum and ground rent £50.00 per annum. The agent has not had sight of confirmation documents and therefore the buyer is advised to obtain verification from their solicitor or surveyor.



## Floor Plan



## Viewing

Please contact us on 01323 723 500 if you wish to arrange a viewing appointment for this property or require further information.

These particulars, whilst believed to be accurate are set out as a general outline only for guidance and do not constitute any part of an offer or contract. Intending purchasers should not rely on them as statements of representation of fact, but must satisfy themselves by inspection or otherwise as to their accuracy. No person in this firm's employment has the authority to make or give any representation or warranty in respect of the property.

## Area Map



## Energy Efficiency Graph

